
**特点 Features:**

- 触点容量: 70A触点切换能力  
Contact switching capability: 70A.
- 两相继电器  
Two pole/phase relay.
- 符合IEC62055-31 UC2/UC3标准  
IEC62055-31 UC2/UC3 recognized

**触点参数 CONTACT DATA**

型号	Model	YC611A
触点形式	Contact Arrangement	2A、2B
接触电阻	Contact Resistance	2mΩ Max.
触点材料	Contact Material	银合金 Silver Alloy
额定负载(阻性)	Contact Rating ( Res.Load )	70A 250VAC
最大切换电流	Max. Switching Current	70A
最大切换电压	Max. Switching Voltage	440VAC/110VDC
最大切换功率	Max. Switching Power	17500VA
机械寿命	Mechanical endurance	5x10 <sup>5</sup> 次 OPS
电气寿命	Electrical endurance	1x10 <sup>4</sup> 次 OPS

**性能参数 CHARACTERISTICS**

吸合时间(额定电压下)	Set Time ( at nomi.volt. )	20ms Max.
复归时间(额定电压下)	ResetTime ( without diode )	20ms Max.
绝缘电阻	Insulation Resistance	Min.1000Mohms ( 500VDC )
介质耐压	Dielectric Strength	触点与触点间 Between Open Contacts : 1,800VAC, 50/60Hz 1 min.
		触点与线圈间 Between Coil & Contacts: 4,000VAC, 50/60Hz 1 min.
抗振性	Vibration resistance	误动作 Functional: 10~55Hz 双振幅 1.5mm ( DA )
		耐久 Destructive: 10~55Hz 双振幅 1.5mm ( DA )
抗冲击	Shock resistance	误动作 Functional: 10G Min.
		耐久 Destructive: 100G Min.
环境温度	Ambient Temperature	-40°C~+70°C (不冷凝 No condensation)
重量	Unit Weight	约 Approx. 80g

**线圈参数 COIL DATA (at 23°C)**

额定电压 Rated voltage (VDC)	额定电流 Rated current ±10%(mA)	线圈电阻 Coil resistance ±10%(Ω)	脉冲宽度 Pulse duration ms (Min.)	吸合电压 Operate voltage VDC (Max.)	复位电压 Release voltage VDC (Max.)	线圈类型 Coil type :
6	300	20	50ms	额定电压的 of rated voltage 70 %	额定电压的 of rated voltage 70 %	单线圈 Single coil
9	250/163.6	36/55				
12	125	96				
6	300	2*10	50ms	额定电压的 of rated voltage 70 %	额定电压的 of rated voltage 70 %	双线圈 Dual coil
9	250/150	2*18/2*30				
12	120.0	2*50				

## 订货标记示例 ORDERING INFORMATION

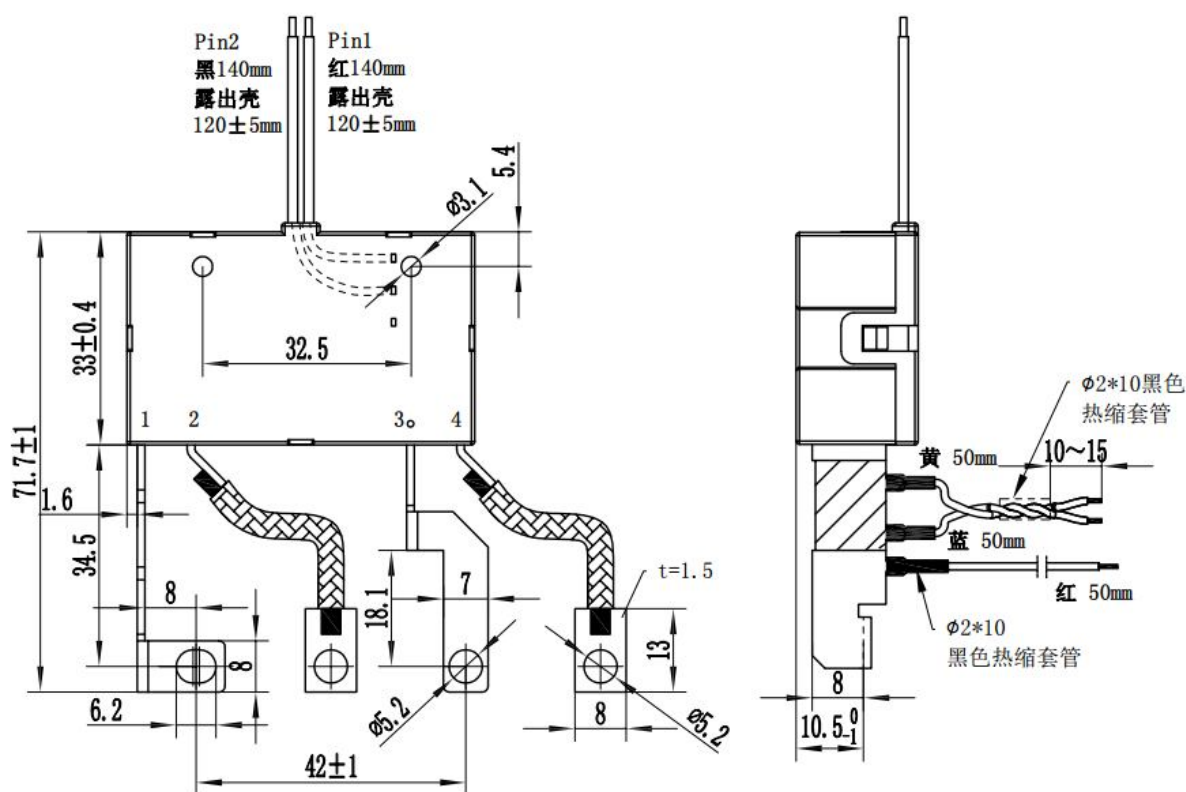
YC611A	-70A	-2	09	D	M	1		
							线圈类型 Coil type :	1-单线圈 Single coil 2-双线圈 Dual coil
							触点形式 Contact form :	M-常开, B-常闭 M-Form A, B-Form B
							线圈功耗 Coil power :	D-标准功耗 D-Standard power consumption
							线圈规格 Coil voltage :	06,09,12 (VDC)
							触点组数 Number of poles :	2-2组 2-2 Group
							额定电流 Rated current :	70A - 70A
							基本型号 Type designation :	YC611A

## 外形尺寸和接线图 (单位: mm)

## OUTLINE DIMENSIONS AND WIRING DIAGRAM (Unit: mm)

外形尺寸

Outline Dimensions



注 Remark :

1.未标注尺寸公差

Unmarked dimensional tolerance

- ≤1mm: ±0.2mm ;
- (1~5)mm: ±0.3mm ;
- ≥5mm: ±0.4mm.

2.安装孔尺寸公差: ±0.1mm.

The tolerance of PCB layout is always: ±0.1mm.

3.引出脚尺寸为预焊前尺寸.

Extended terminal dimension is dimension before soldering.

## 接线图 WIRING DIAGRAM

