

# Push Switch

## YSP-2216 Dip TYPE



### Feature

5.8mm x 5.8mm x 10.0 mm outer dimension.  
Direct mounted on PC board type.

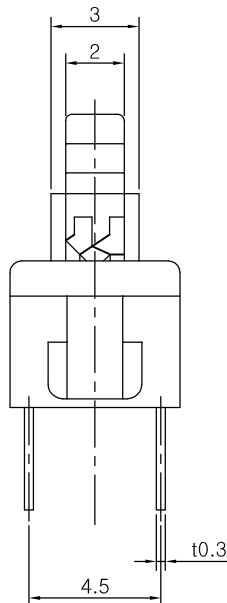
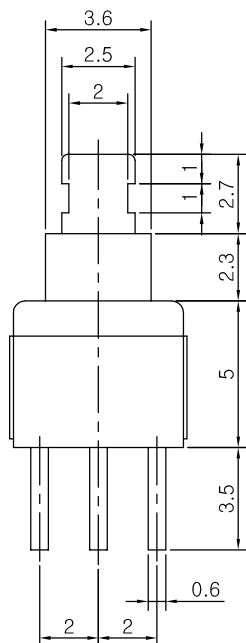
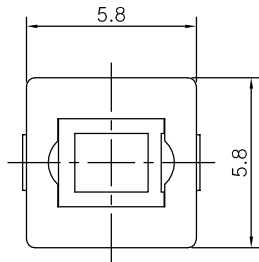
### Applications

For operating various electronic devices such as audio devices, communication devices, portable devices, etc.

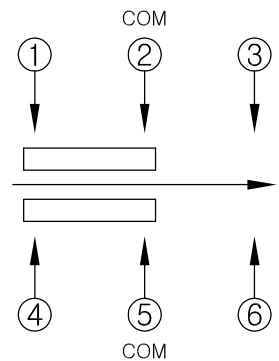
### Specifications

Item	Rating	Stroke	Contact Resistance	Circuit	Timing	Operating Mode	Operating Force	Operating Life
<b>YSP-2216S</b>	DC 30V 0.1A MAX	Full : 1.7 mm Lock : 1.0 mm	100mΩ MAX	2C-2P	Non-shorting	Self-lock	180 ± 80gf	10,000 Cycle
<b>YSP-2216N</b>	DC 30V 0.1A MAX	Full : 1.7 mm	100mΩ MAX	2C-2P	Non-shorting	Non-lock	250 ± 80gf	10,000 Cycle

### Dimensions



### CIRCUIT DIAGRAM



### PCB MOUNTING HOLE DIMENSIONS

