

Push Switch

YSP-2216F Dip TYPE



Feature

5.8mm x 5.8mm x 7.3 mm outer dimension.
Direct mounted on PC board type.

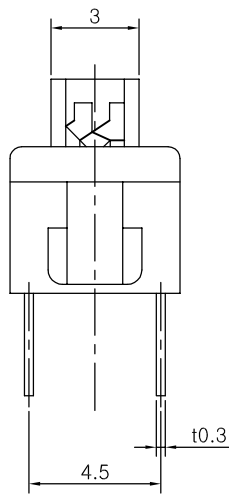
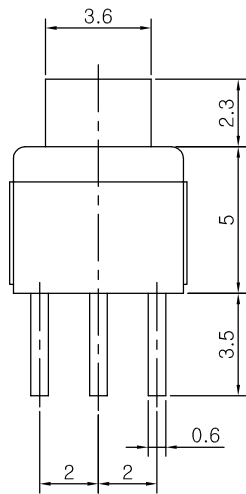
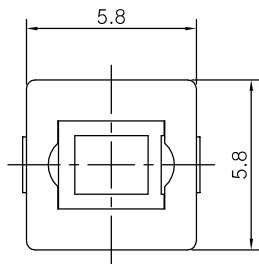
Applications

For operating various electronic devices such as audio devices, communication devices, portable devices, etc.

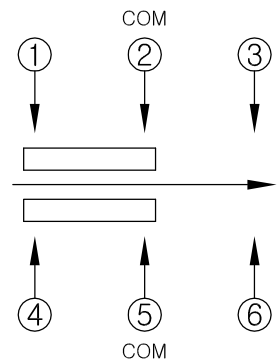
Specifications

Item	Rating	Stroke	Contact Resistance	Circuit	Timing	Operating Mode	Operating Force	Operating Life
YSP-2216SF	DC 30V 0.1A MAX	Full : 1.7 mm Lock : 1.0 mm	100mΩ MAX	2C-2P	Non-shorting	Self-lock	180 ± 80gf	10,000 Cycle
YSP-2216NF	DC 30V 0.1A MAX	Full : 1.7 mm	100mΩ MAX	2C-2P	Non-shorting	Non-lock	250 ± 80gf	10,000 Cycle

Dimensions



CIRCUIT DIAGRAM



PCB MOUNTING HOLE DIMENSIONS

