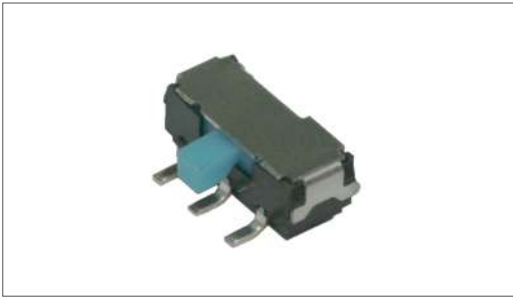


Slide Switch

YSS-1206 SMD TYPE



Feature

2mm-travel, 1.5x1.5x2mm stem.
Horizontal operating direction against PC board.
Reflow solderable type.

Applications

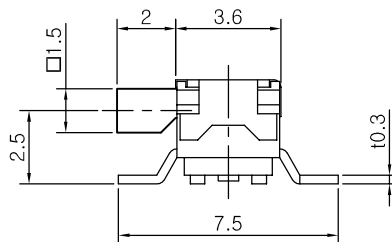
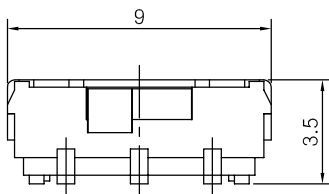
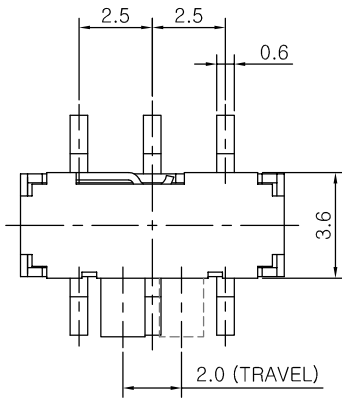
Mode changing for LCD TV, DVD player, mini component, remote controls..etc.

Switches for other machines that requires mode changing activity.

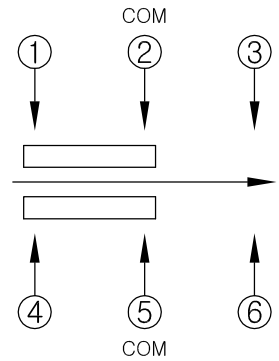
Specifications

| Item | Rating | Travel | Contact Resistance | Circuit | Timing | Operating Force | Operating Life |
|-------|-------------------|--------|--------------------|---------|--------------|-----------------|----------------|
| Value | DC 6V 0.3A MAX | 2 mm | 70mΩ MAX | 2C-2P | Non-shorting | 200 ± 100gf | 10,000 Cycle |

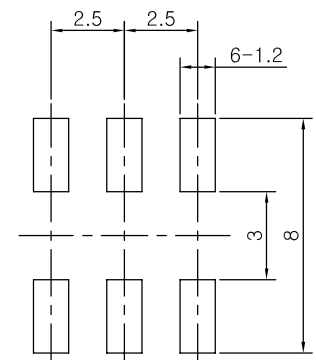
Dimensions



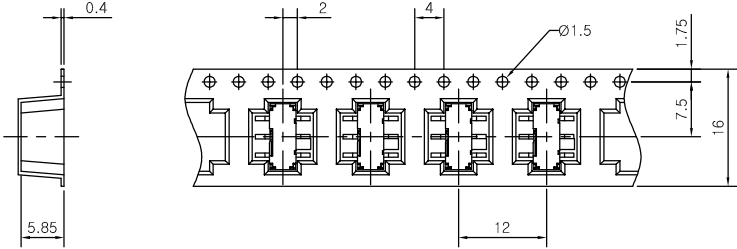
CIRCUIT DIAGRAM



PCB MOUNTING HOLE DIMENSIONS



REEL POCKET



- 1. General Tolerance : 0.1mm
- 2. Angle for pocket side : 5°
- 3. Pocket Material : Plastic
- 4. Packing quantity : 1,000 PCS
- 5. Reel Diameter : 330mm