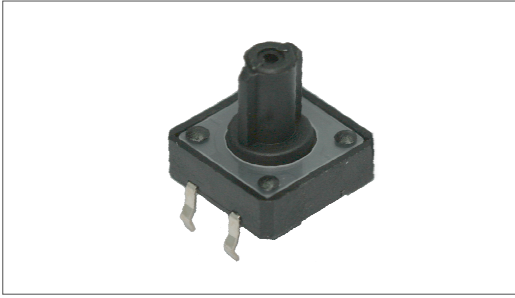


# Tact Switch

## YST-1103A Dip Type



### Feature

12mm x 12mm outer dimension suites directly mounted on PC board.

Available operating forces : 160gf, 250gf

### Applications

It has clearest contact feeling and enough size.

YST-1103 satisfy needs of broad operating area; for various industrial devices and home appliances.

### Specifications

Item	Rating	Travel	Contact Resistance	Bounce	Operating Force	Operating Life
Value	DC 12V 50mA MAX	0.3 ± 0.1mm	100mΩ MAX	10m sec MAX	160 ± 50gf	100,000 Cycle

### Dimensions

