

Tact Switch

YST-1111E SMD Type



Feature

Horizontal type capable of operating in the direction horizontal to the PC board.
Reflow solderable.

Available operating forces : 160gf, 250gf

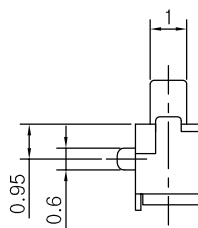
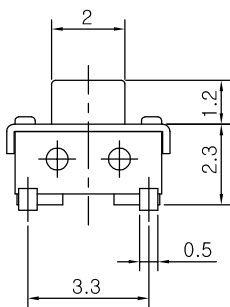
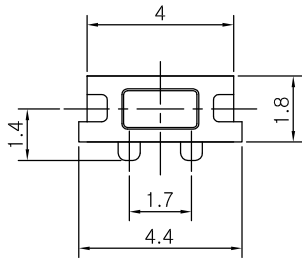
Applications

For operating various compact electronics devices like; mobile-phone, communication device, requiring high density mounting.

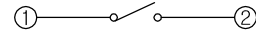
Specifications

Item	Rating	Travel	Contact Resistance	Bounce	Operating Force	Operating Life
Value	DC 12V 50mA MAX	0.2 ± 0.1mm	100mΩ MAX	10m sec MAX	160 ± 50gf	50,000 Cycle

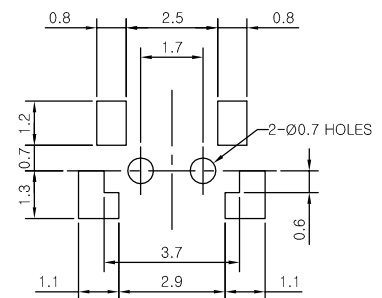
Dimensions



CIRCUIT DIAGRAM



PCB MOUNTING HOLE DIMENSIONS



REEL POCKET

