

Tact Switch

YST-1127 SMD Type



Feature

4.5x4.5x1.5mm outside demenssions for suitable high-density mounting.
Reflow solderable.

Available operating forces : 180gf, 250gf

Applications

For operating various compact electronics devices like; moble-phone, communication device, requiring high density mounting.

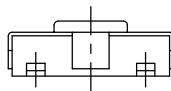
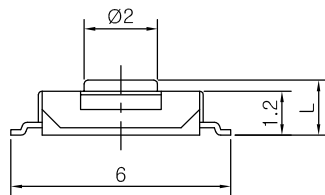
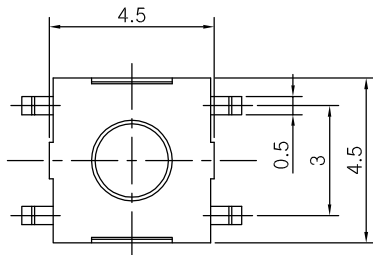
Specifications

Item	Rating	Travel	Contact Resistance	Bounce	Operating Force	Operating Life
Value	DC 12V 50mA MAX	0.2 ± 0.1mm	100mΩ MAX	10m sec MAX	180 ± 50gf	50,000 Cycle

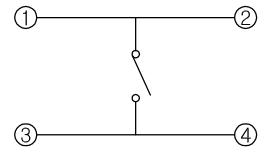
Dimensions

Height (L)

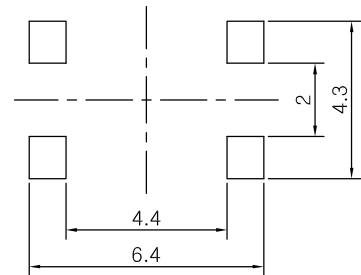
TAG	(Blank)	A			
Value (mm)	1.5	4.3			



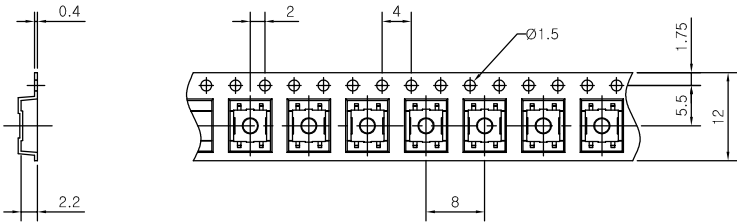
CIRCUIT DIAGRAM



PCB MOUNTING HOLE DIMENSIONS



REEL POCKET



- 1. General Tolerance : 0.1mm
- 2. Angle for pocket side : 5°
- 3. Pocket Material : Plastic
- 4. Packing quantity : 4,000 PCS
- 5. Reel Diameter : 330mm