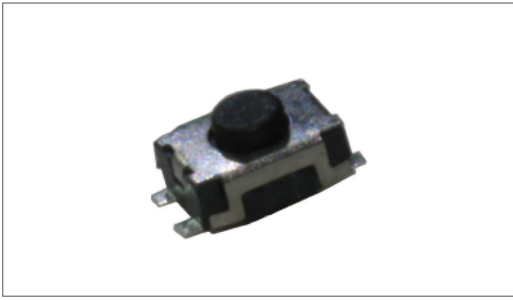


# Tact Switch

## YST-2019 SMD Type



### Feature

2.9mm x 3.9mm x 2mm outer dimension.  
Reflow solderable and dust prevented structure.

Available operating forces : 160gf, 260gf

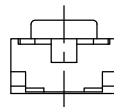
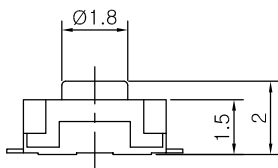
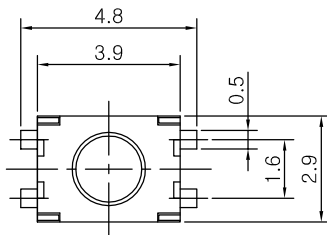
### Applications

For operating various electronic devices such as audio devices, communication devices, portable devices, etc.

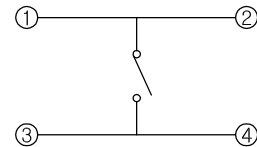
### Specifications

Item	Rating	Travel	Contact Resistance	Bounce	Operating Force	Operating Life
Value	DC 12V 50mA MAX	0.2 ± 0.1mm	100mΩ MAX	10m sec MAX	160 ± 50gf	50,000 Cycle

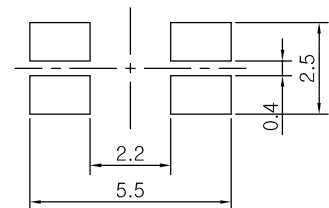
### Dimensions



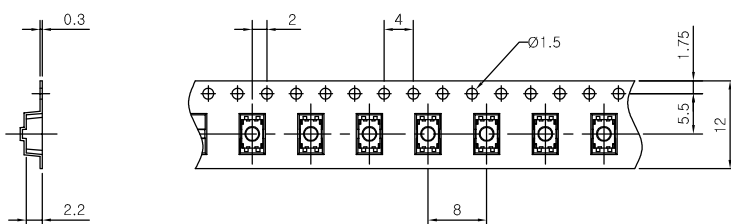
### CIRCUIT DIAGRAM



### PCB MOUNTING HOLE DIMENSIONS



### REEL POCKET



1. General Tolerance : 0.1mm
2. Angle for pocket side : 5°
3. Pocket Material : Plastic
4. Packing quantity : 2,500 PCS
5. Reel Diameter : 330mm