
特点 Features:

- 高负载能力40A
High switching capability:40A.
- 可供密封型和敞开型
Sealed type and open type available.
- 可供4KV耐压
Dielectric strength:4KV optional (between coil & contacts).

触点参数 CONTACT DATA

型号	Model	YX209H
触点形式	Contact Arrangement	1A、1B、1C
接触电阻	Contact Resistance	100mΩ Max.
触点材料	Contact Material	银合金 Silver Alloy
额定负载(阻性)	Contact Rating (Res.Load)	40A/30A 250VAC/30VDC
最大切换电流	Max. Switching Current	40A
最大切换电压	Max. Switching Voltage	277VAC/30VDC
最大切换功率	Max. Switching Power	10000VA/1200W
机械寿命	Mechanical endurance	1x10 ⁷ 次 OPS
电气寿命	Electrical endurance	1x10 ⁵ 次 OPS

性能参数 CHARACTERISTICS

吸合时间(额定电压下)	Operate Time (at nomi.volt.)	15ms Max.
释放时间(不带二极管)	Release Time (without diode)	10ms Max.
绝缘电阻	Insulation Resistance	1000MΩ Min.(500VDC)
介质耐压	Dielectric Strength	触点与触点间 Between Open Contacts : 1,500VAC, 50/60Hz 1 min.
		触点与线圈间 Between Coil & Contacts: 2,500VAC, 50/60Hz 1 min.
		触点与线圈间 Between Coil & Contacts: 4,000VAC, 50/60Hz 1 min. (4KV)
抗振性	Vibration resistance	误动作 Functional: 10~55Hz 双振幅 1.5mm (DA)
		耐久 Destructive: 10~55Hz 双振幅 1.5mm (DA)
抗冲击	Shock resistance	误动作 Functional: 10G Min.
		耐久 Destructive: 100G Min.
环境温度	Ambient Temperature	-40℃~+105℃ (不冷凝 No condensation)
重量	Unit Weight	约 Approx. 28.0g

线圈参数 COIL DATA (at 23℃)

额定电压 Rated voltage (VDC)	额定电流 Rated current ±10%(mA)	线圈电阻 Coil resistance ±10%(Ω)	最大连续外加电压 Max allowable voltage VDC (Max.)	吸合电压 Operate voltage VDC (Max.)	释放电压 Release voltage VDC (Min.)	额定功率 Rated coil power (W)
3	300.0	10	额定电压的 of rated voltage 130 %	额定电压的 of rated voltage 75 %	额定电压的 of rated voltage 5 %	约 approx. 0.9
5	180.0	28				
6	150.0	40				
9	100.0	90				
12	75.0	160				
15	60.0	250				
18	50.0	360				
24	37.5	640				
36	25.0	1,440				
48	18.8	2,560				
60	15.0	4,000				
72	12.5	5,760				
110	8.2	13,444				

线圈参数 COIL DATA (at 23°C)						
额定电压 Rated voltage (VDC)	额定电流 Rated current ±10%(mA)	线圈电阻 Coil resistance ±10%(Ω)	最大连续外加电压 Max allowable voltage VDC (Max.)	吸合电压 Operate voltage VDC (Max.)	释放电压 Release voltage VDC (Min.)	额定功率 Rated coil power (W)
3	533.3	6	额定电压的 of rated voltage 130 %	额定电压的 of rated voltage 75 %	额定电压的 of rated voltage 5 %	约 approx. 1.6
5	320.0	16				
6	266.7	23				
9	177.8	51				
12	133.3	90				
15	106.7	141				
18	88.9	203				
24	66.7	360				
36	44.4	810				
48	33.3	1,440				
60	26.7	2,250				
72	22.2	3,240				
110	14.5	7,563				

线圈参数 COIL DATA (at 23°C)						
额定电压 Rated voltage (VDC)	额定电流 Rated current ±10%(mA)	线圈电阻 Coil resistance ±10%(Ω)	最大连续外加电压 Max allowable voltage VDC (Max.)	吸合电压 Operate voltage VDC (Max.)	释放电压 Release voltage VDC (Min.)	额定功率 Rated coil power (W)
3	750.0	4	额定电压的 of rated voltage 130 %	额定电压的 of rated voltage 75 %	额定电压的 of rated voltage 5 %	约 approx. 2.25
5	450.0	11				
6	375.0	16				
9	250.0	36				
12	187.5	64				
15	150.0	100				
18	125.0	144				
24	93.8	256				
36	62.5	576				
48	46.9	1,024				
60	37.5	1,600				
72	31.3	2,304				
110	20.5	5,378				

线圈参数 COIL DATA (at 23°C)						
额定电压 Rated voltage (VAC)	额定电流 Rated current ±10%(mA)	线圈电阻 Coil resistance ±10%(Ω)	最大连续外加电压 Max allowable voltage VAC (Max.)	吸合电压 Operate voltage VAC (Max.)	释放电压 Release voltage VAC (Min.)	额定功率 Rated coil power (W)
6	250.0	8	额定电压的 of rated voltage 110 %	额定电压的 of rated voltage 80 %	额定电压的 of rated voltage 30 %	约 approx. 1.5VA
12	125.0	34				
24	62.5	134				
48	31.3	538				
110	13.6	2,823				
220	6.8	11,293				

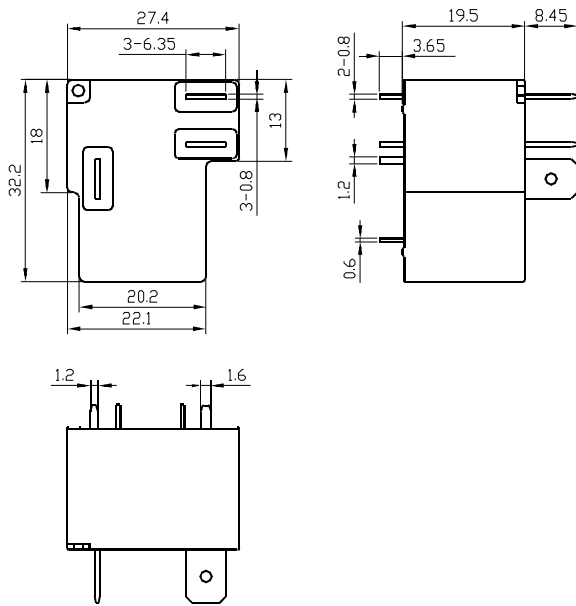
订货标记示例 ORDERING INFORMATION

YX209H	-S	-1	12	D	M	X	
							特殊参数 Special parameters: 无-标准型, 字母或数字-特殊要求
							触点形式 Contact form: 无-转换, M-常开, B-常闭 Nil-Form C, M-Form A, B-Form B
							线圈功耗 Coil power: D-直流DC 0.9 W, H-直流DC 1.6 W, G-直流DC 2.25 W, A-交流AC 1.5VA
							线圈规格 Coil voltage: 03,05,06,09,12,15,18,24,36,48,60,72,110 (VDC) 06,12,24,48,110,220 (VAC)
							触点组数 Number of poles: 1-1组 1-1 Group
							封装形式 Protective construction: S-塑封式 S-Flux proofed
							基本型号 Type designation: YX209H

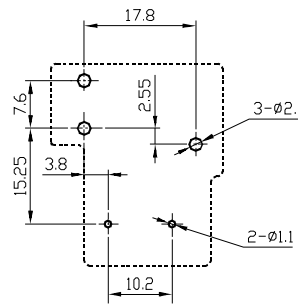
外形尺寸、接线图、安装孔位图 (单位: mm)

OUTLINE DIMENSIONS, WIRING DIAGRAM AND PCB LAYOUT (Unit: mm)

外形尺寸
Outline Dimensions

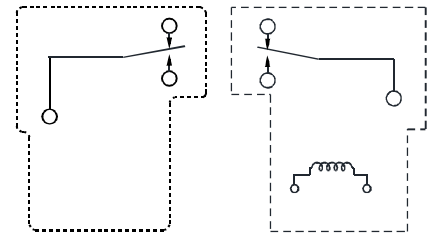


安装孔位图 (底视图)
PCB Layout (Bottom View)

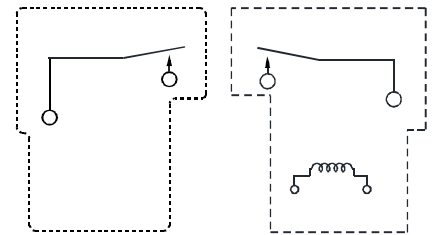


接线图 (底视图)
Wiring Diagram (Bottom View)

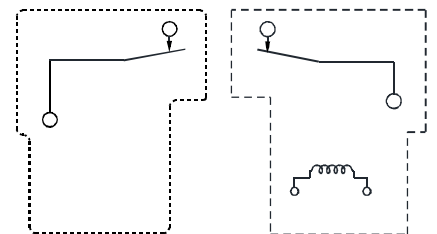
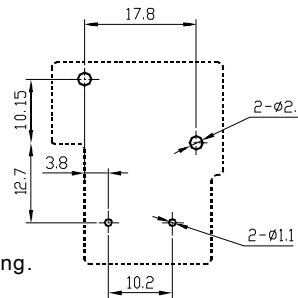
转换型
1 Form C



常开型
1 Form A



常闭型
1 Form B

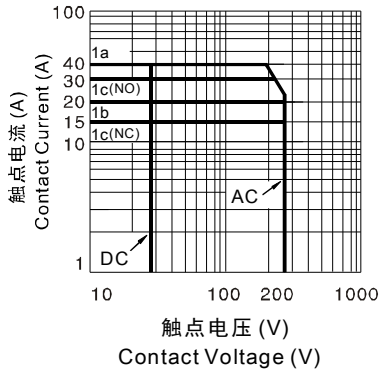


注 Remark:

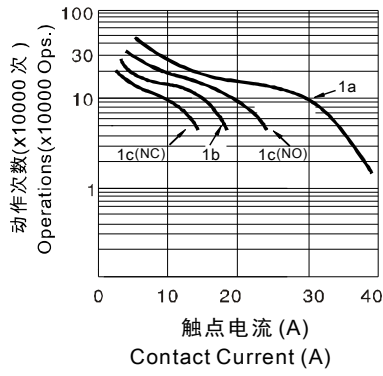
1. 未标注尺寸公差 Unmarked dimensional tolerance
 $\leq 1\text{mm}$: $\pm 0.2\text{mm}$; $(1\sim 5)\text{mm}$: $\pm 0.3\text{mm}$; $\geq 5\text{mm}$: $\pm 0.4\text{mm}$.
2. 安装孔尺寸公差: $\pm 0.1\text{mm}$.
 The tolerance of PCB layout is always: $\pm 0.1\text{mm}$.
3. 引出脚尺寸为预焊前尺寸.
 Extended terminal dimension is dimension before soldering.

性能曲线图 CHARACTERISTIC CURVES

最大切换功率
Max. Switching Power



寿命曲线
Endurance Curve



线圈温升
Coil Temperature Rise

